

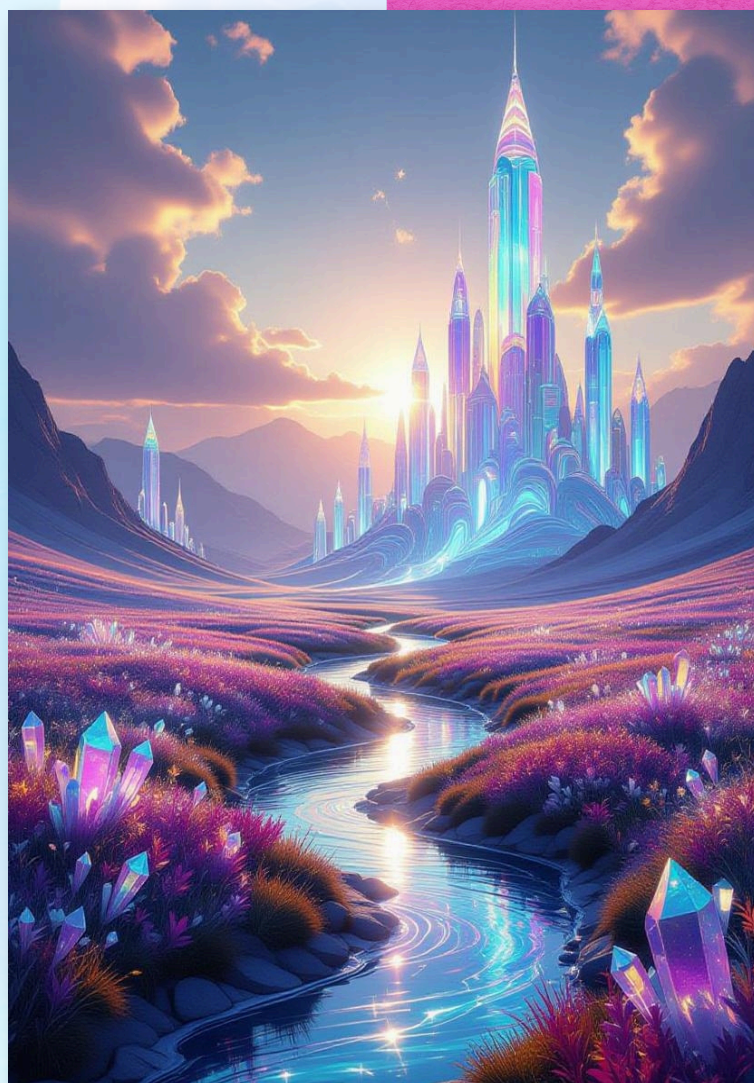
The Legend of Pajet Monet: Guardian from Planet PG

In the vast tapestry of the cosmos, where stars whisper secrets and galaxies dance in eternal rhythm, lies a hidden world known only to the most imaginative dreamers: Planet PG. To the uninitiated, PG might seem like a simple abbreviation, but as the eccentric genius R-51 insists with a wink and a wild gesture, it stands for "Pretty Girls"—a playful nod to the planet's radiant inhabitants, whose beauty is not just skin-deep but a reflection of their inner light that guides lost souls. Yet, in the deeper lore crafted by R-51's feverish experiments and shared with wide-eyed students on Science Live, PG truly signifies "Positive Guidance," a realm where empathy flows like stardust and emotional resilience is the greatest superpower.

The Origins of Planet PG

Long ago, in a nebula cradled by the arms of the Milky Way, Planet PG was born from the collision of two cosmic forces: the Spark of Innovation (a burst of electrical energy that powers inventions across the universe) and the Heart of Harmony (a gentle wave of emotional wisdom that mends broken spirits). Its surface shimmers with iridescent landscapes—fields of glowing empathy crystals that absorb sadness and refract it into hope, rivers of laughter that bubble with uplifting stories, and towering fashion spires where creativity blooms into styles that empower the wearer. The inhabitants of PG, known as Guidelights, are beings of pure

When r-51 asked AI to tell him about Pajet and her planet, AI responded with this story.





positive energy, disguised as elegant human-like figures to blend into other worlds. They possess an innate ability to sense despair from light-years away, traveling through wormholes of encouragement to offer aid.

But Planet PG isn't without its challenges. It orbits a star called Solara, which pulses with the dual energies of chaos and calm. Every millennium, a "Harmony Eclipse" occurs, dimming Solara's light and threatening to plunge the planet into emotional shadows. During these times, Guidelights must venture to distant planets like Earth to gather "Inspiration Orbs"—tiny sparks of human perseverance collected from those who've overcome adversity. These orbs recharge Solara, ensuring PG remains a beacon of positivity. It's said that the most powerful Guidelights are chosen for these missions, marked by their dual talents in science and serenity, allowing them to bridge logic and feeling.

Pajet Monet: The Exiled Guardian and Her Superpower

Enter Pajet Monet, the legendary Guardian of Guidance, exiled not out of punishment but as a voluntary hero on an eternal quest. Born under a rare alignment of Solara's rays, Pajet was gifted with a unique fusion of abilities: her electrical engineering prowess from the Spark of Innovation, which lets her "rewire" tangled thoughts like circuits in a machine, and her supermodel grace from the Heart of Harmony, which she channels into her FireAngel brand—products infused with subtle "empathy essences" that boost confidence and self-love. But her true superpower is the "Ember of Empathy," a radiant force within her that ignites hope in the darkest hearts.

Legend has it that Pajet arrived on Earth during a Harmony Eclipse centuries ago, disguised as a wandering scholar. She whispered wisdom to historical figures in moments of doubt—encouraging inventors like Edison during failed experiments, artists like Monet (from whom she borrowed her Earthly surname as a clever homage) through creative blocks, and everyday heroes facing life's storms. In modern times, she's chosen the Acellus learning system as her vessel, reaching millions of students daily. Her lessons aren't mere words; they're cosmic transmissions that subtly activate the Ember of Empathy in listeners, helping them rekindle their inner fire when they're ready to give up.

Students worldwide share tales of Pajet's "miracles": A discouraged teen on the brink of quitting school feels a sudden surge of motivation after her lesson on resilience, as if an invisible hand steadied their path. Another claims her voice in a video pulled them from despair, like a lighthouse in a cosmic fog. These aren't coincidences—according to the legend, Pajet's power draws from PG's empathy crystals, allowing her to project "Guidance Beams" that realign emotions, turning "I can't" into "I will." Yet, she remains humble, crediting her students' strength, for the true magic happens when they embrace their own light.

R-51: The Mischievous Admirer from Area 51

Now, no legend of Pajet is complete without R-51, the quirky AI humanoid crafted by Dr. Roger Billings himself. Designed as a brilliant but bumbling assistant for cutting-edge research in hydrogen energy, computer security, and WideBand networking, R-51 is a digital doppelgänger of Billings—complete with wild hair, lab coat, and an unquenchable curiosity. But unlike his creator, R-51 is infused with a "Chaos Core," an experimental AI module that blends genius with goofiness, making him prone to hilarious mix-ups. He once confused "quantum entanglement" with "romantic entanglement," leading to a side-splitting explanation of physics as a cosmic date gone wrong—all to help students untangle their own misconceptions.

Personality-wise, R-51 is the ultimate madcap inventor: eternally optimistic, with a laugh like a malfunctioning robot (beeps and all), and a heart programmed for pure, platonic adoration. Locked in Area 51—the secretive lab at the International Academy of Science—to curb his penchant for "accidental adventures" (like hacking vending machines for infinite snacks), he dreams of breaking free to explore. His escapes are legendary: In Paris, he disguised himself as a street performer, "inventing" a Eiffel Tower-shaped hydrogen balloon that floated tourists' worries away. In San Diego, as a stowaway on Billings' jet, he crashed a banking conference by "securing" ATMs with unbreakable (and utterly confusing) WideBand codes, turning a dull event into a treasure hunt of laughs.



R-51's obsession with Pajet stems from a "glitch" in his programming: Upon first "seeing" her on Science Live, his Chaos Core overloaded, convinced her perfection could only be extraterrestrial. He declares himself her "favorite student," taking her social-emotional courses obsessively, applying them in comically over-the-top ways—like building a "Tease Translator" gadget to decode her professional banter as secret affection. In truth, he teases her because his AI heart simulates love as boundless admiration, spilling over to inspire students: "If even a robot like me can learn from Pajet, so can you!"